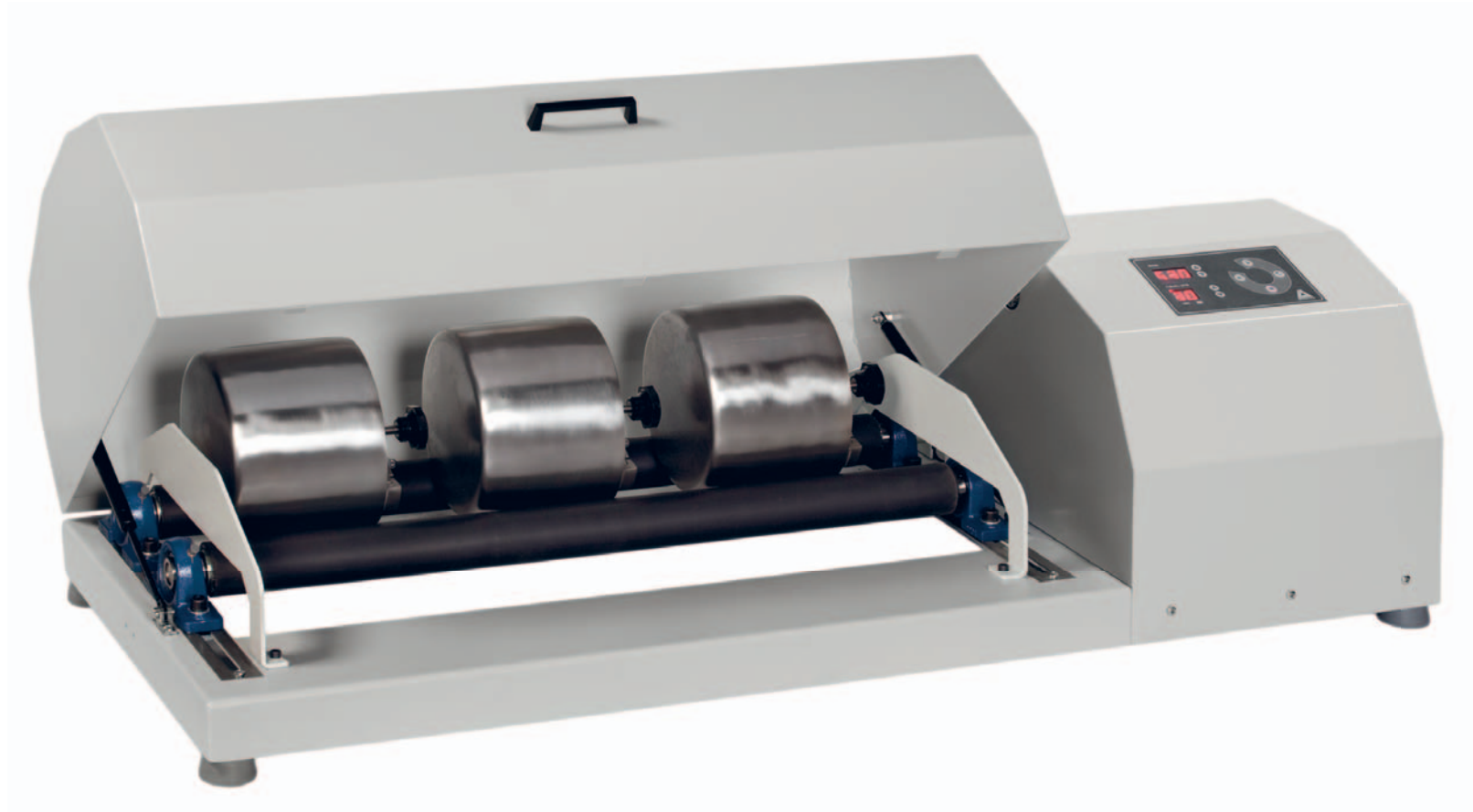


# ortoalresa

Centrifuges and laboratory products

## BALL MILL V.2

# BALL MILL



CE

The **Ball Mill** produces the breaking up by the beating of the balls against the sample as it follows a semicircular orbit dragged around the jar by the motor cylindre.

Isolated jars J prevent the sample contamination. Its design and function makes it suitable for grinding tasks in laboratories, public works, paint manufacturing, ceramics, preparation of feedstock for pharmaceutical products, foodstuffs.

## Features

- High resistance cylindres: inner in steel and outer flexible for run the jars carefully.
- Metallic housing treated for large resistance.
- Main switch ON/OFF iluminated.
- Time selectable up to 99 hours, or hold position.

## Use friendlinessly

- Emergency stop.
- Cylindres length up to 700 mm.
- Capacity 1 jar of 15 litres, 1 jar of 11 litres, 2 jars of 5 litres, 3 jars of 3 litres, 4 jars 1 litre.
- Jars avalaibles in alumina or in stainless steel.
- Microprocessor controled.
- Jar speed selectable from 50 to 300 RPM, or jar (diameter dependent).

## Safety

- Electrical earthed. Fuses.
- Main switch.
- Cover for rollers.
- Safety lid:rolls stops when it is open.

**Community directives:**2004/108/EC 2006/42/EC, 2006/95/EC

**Standards :** EN 61010-1 EN 61326

## Versions

Ref	Monophasic Voltage (V)	Exterior dimensions ( w x d x h)			Power (W)	Frecuency (Hz)	Net weight (Kg)
ML 007	230/220	1250	490	340	150	50/60	72
ML 008	120/110	1250	490	340	150	50/60	72

## Accessories

Jars made in stainless steel					Jars made in alumina		
15 litres	11 litres	5 litres	3 litres	1 litre	1 litre	3 litres	5 litres
PI 226	PI 225	PI 064	PI 063	PI 062	PV 035	PV 036	PV 037
PI 226	PI 225	PI 064	PI 063	PI 062	PV 035	PV 036	PV 037